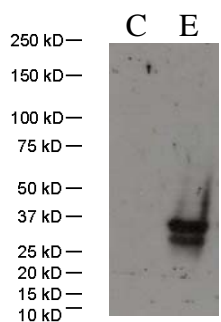




Anti-E1 (HCV)

Product Name	Anti- E1 (HCV)
Catalog No	IT-004-004
Source	Rabbit Polyclonal Antibody
Formulation	Each vial contains 200 µg purified IgG in 100 µl PBS with less than 0.1% gelatin and 0.1% sodium Azide.
Immunogen	Hepatitis C virus (HCV) envelope protein 1 (E1) (Genebank accession #AY460204)
Applications	Western Blotting (1:200-1:1000)
Specificity	Reacts with E1 (HCV). Cross-reactivity to E1 from other HCV not tested.
Storage	Store at 4°C; <u>DO NOT FREEZE</u> ; stable for 1 year from the date of shipment. Non-hazardous. No MSDS required.
Use Limitation	For research use only, not for use in diagnostic procedures.



C: 293 cell extract control
E: 293 cell expressing E1 (HCV)

Note: