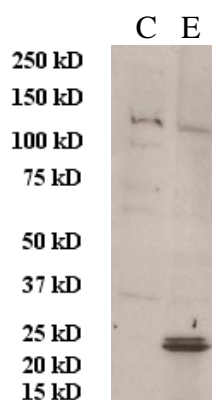




Anti-Luciferase (*Metridia*)

Product Name	Anti-Secreted luciferase (<i>Metridia</i>)
Catalog No	IT-000-012
Source	Rabbit Polyclonal Antibody
Formulation	Each vial contains 200 µg purified IgG in 100 µl PBS with less than 0.1% gelatin and 0.1% sodium Azide.
Immunogen	<i>Metridia longa</i> secreted luciferase, a 24 kDa protein from the marine copepod <i>Metridia longa</i> (Genebank No. AAR17541)
Applications	Western Blotting (1:200-1:1000)
Specificity	Reacts <i>Metridia longa</i> secreted luciferase protein. Cross-reactivity not tested.
Storage	Store at 4°C; DO NOT FREEZE ; stable for 1 year from the date of shipment. Non-hazardous. No MSDS required.
Use Limitation	For research use only, not for use in diagnostic procedures.



C: 293 cell extract control
E: 293 cell expressing sLuc(*Metridia*)

Note: