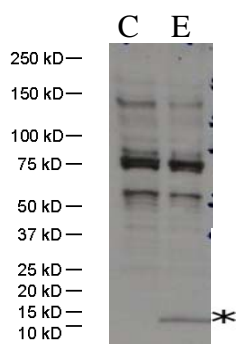




Anti-E (SARS-CoV)

Product Name	Anti-E (SARS-CoV)
Catalog No	IT-002-005
Source	Rabbit Polyclonal Antibody
Formulation	Each vial contains 200 µg purified IgG in 100 µl PBS with less than 0.1% gelatin and 0.1% sodium Azide.
Immunogen	Evelope protein(E) (Beijing02) (Genebank accession # AY278487)
Applications	Western Blotting (1:200-1:1000)
Specificity	Reacts with E (SARS-CoV). Cross-reactivity to E from other SARS-CoV not tested.
Storage	Store at 4°C; <u>DO NOT FREEZE</u> ; stable for 1 year from the date of shipment. Non-hazardous. No MSDS required.
Use Limitation	For research use only, not for use in diagnostic procedures.



C: 293 cell extract control

E: 293 cell expressing E (SARS-CoV), band at *

Note: