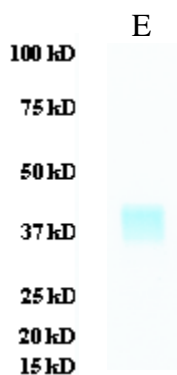




Human Soluble ST2

Product Name	Human soluble ST2
Catalog No	IT-010-003p
Source	Human protein purified from 293 cell culture
Formulation	Each vial contains 100 µg of purified protein (1 mg/ml) in PBS.
Protein	C-terminal 6xHis tagged human soluble ST2 protein (full length)(Genebank No. NP_003847). ST2 is member of interleukin-1 family. The level of sST2 in serum is indicative of acute heart failure.
Applications	WB standard, antibody ELISA, immunogen, etc
Purity	>95%
Storage	Store at 4°C; DO NOT FREEZE ; stable for 1 year from the date of shipment. Non-hazardous. No MSDS required.
Use Limitation	For research use only, not for use in diagnostic procedures.



E: Human sST2

Note: