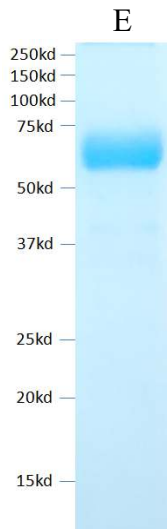


Human Siglec-15/CD33L3



Product Name	Human Siglec-15/CD33L3
Catalog No	IT-300-133p
Source	Recombinant protein purified from 293 cell culture
Formulation	Each vial contains 100 µg of purified protein (1 mg/ml) in PBS.
Protein	Human Siglec-15/CD33L3 (aa 20 - 263; GenBank# Q6ZMC9) with human IgG1 Fc and 6xHis tagged at C-terminus.
Applications	WB standard, antibody ELISA, Functional analysis, etc
Purity	≥95%
Storage	Keep it at 4°C if used within a month. For long term storage, split it into small aliquots and keep at -80°C. Avoid repeated freezing and thawing. The product will be expired one year after receiving if stored properly. Non-hazardous. No MSDS required.
Use Limitation	For research use only, not for use in diagnostic procedures.



E: Human Siglec-15/CD33L3

Note: